



# drava - [DRAW-VA]

A device that records analog rad data of sweet bike rides, using a variety of pencil marks.



My work is a reaction to America's current obsession to obtain quantifiable data in every facet of our personal and professional life. Smartphones, tablets, wearables like Fitbit, Garmin devices, surveys, assessment, and testing are influencing the way we appreciate the human experience.

Many cyclists use power meters and computers attached to their bikes to graph and analyze every aspect of their ride that reaches far beyond a simple miles-per-hour readout. And those of us who ride with them hear about this data. Constantly. I question the benefit, truth, and application of these measurements that dehumanize the experience...the RIDE

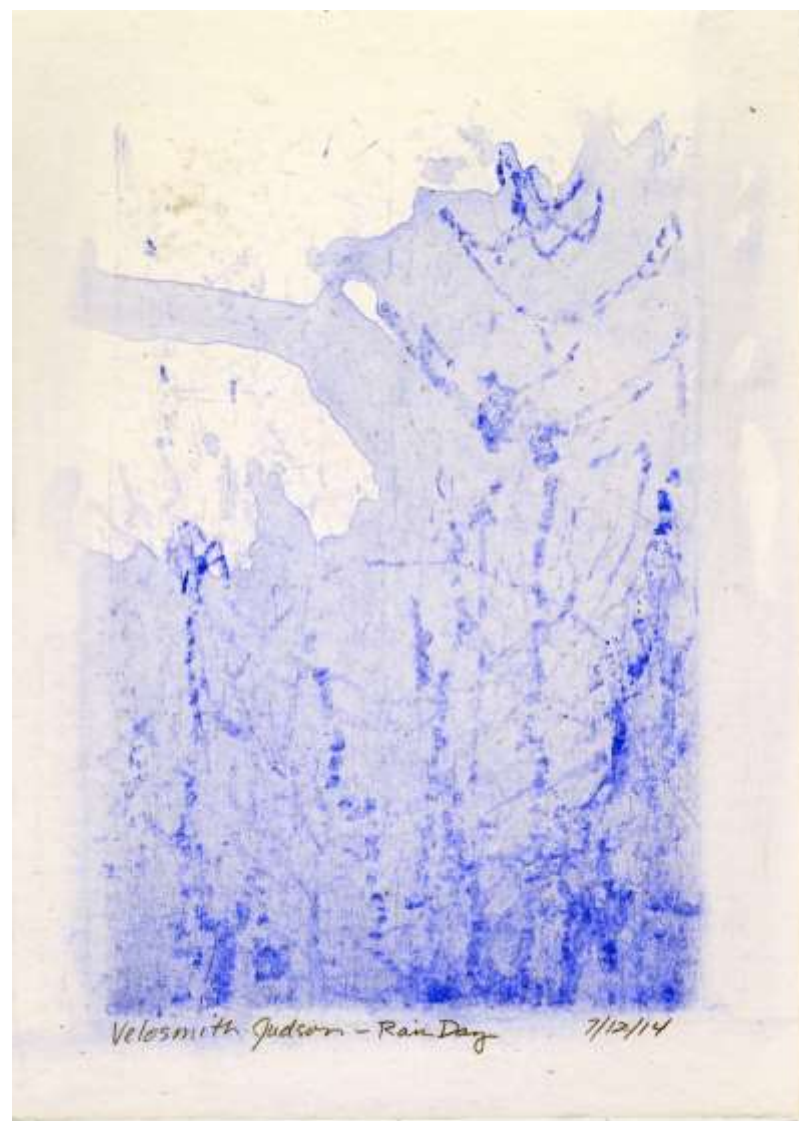
Drava mimics the collection of data obtained with GPS tracker. Through a truly analog method of pencil and paper, I'm creating a physical record of my ride experiences. These drawings are created through the act of riding a bike – bumps, accelerations, braking, and flow.

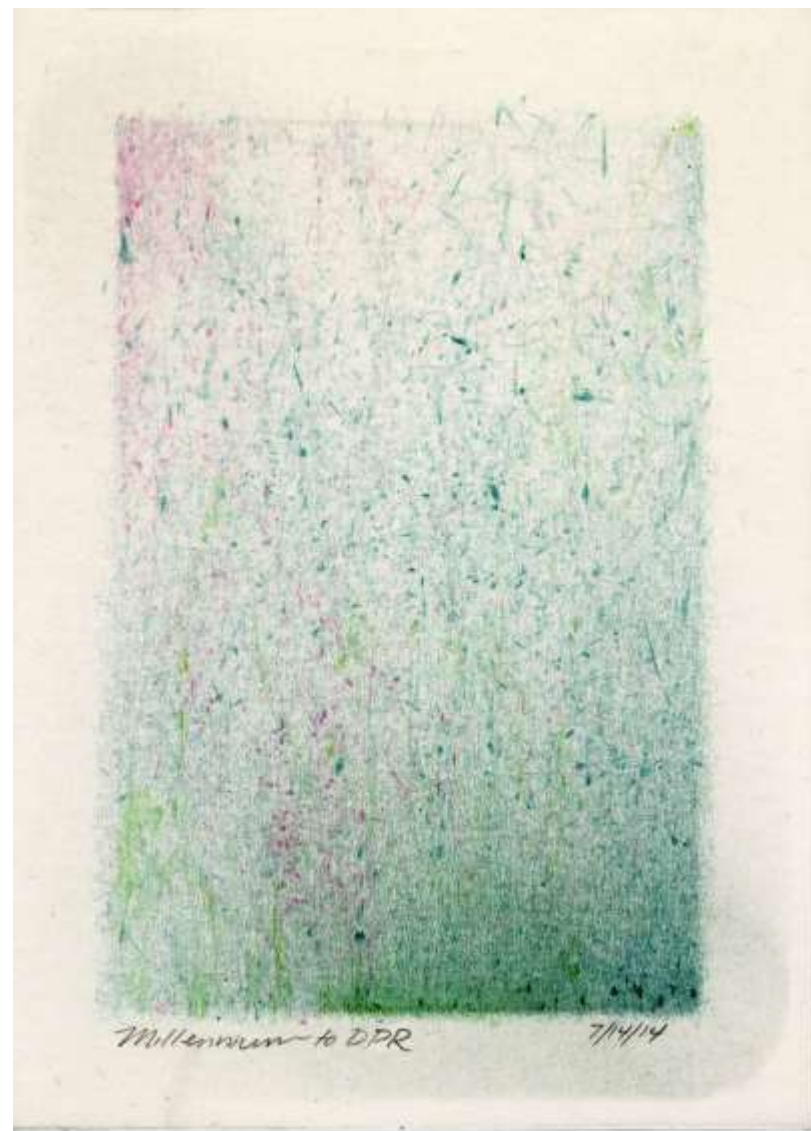
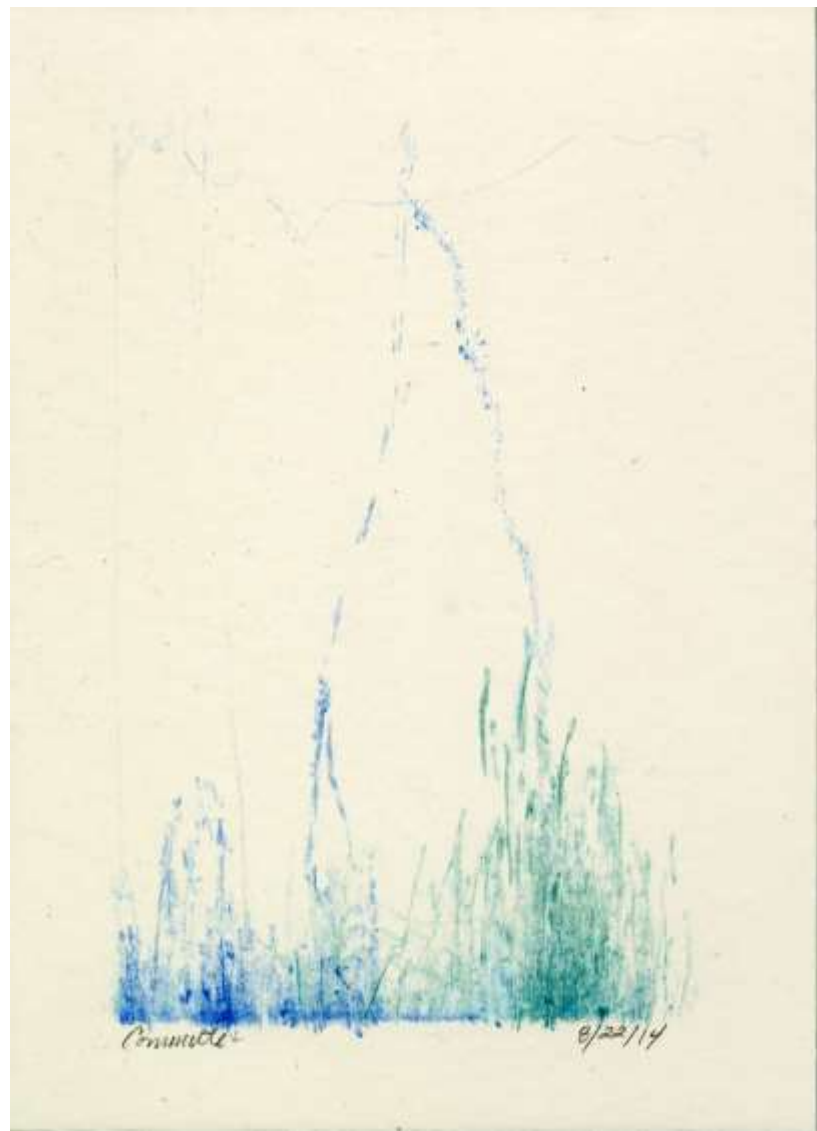
I have designed, hand built, 3D printed, and laser cutter numerous devices throughout this project. Most recently; cardboard, zip ties, rubber bands, and coins, are my building materials---resulting in the latest device which can be easily produced and shared- My tongue has been firmly pressed against my cheek throughout this entire process.

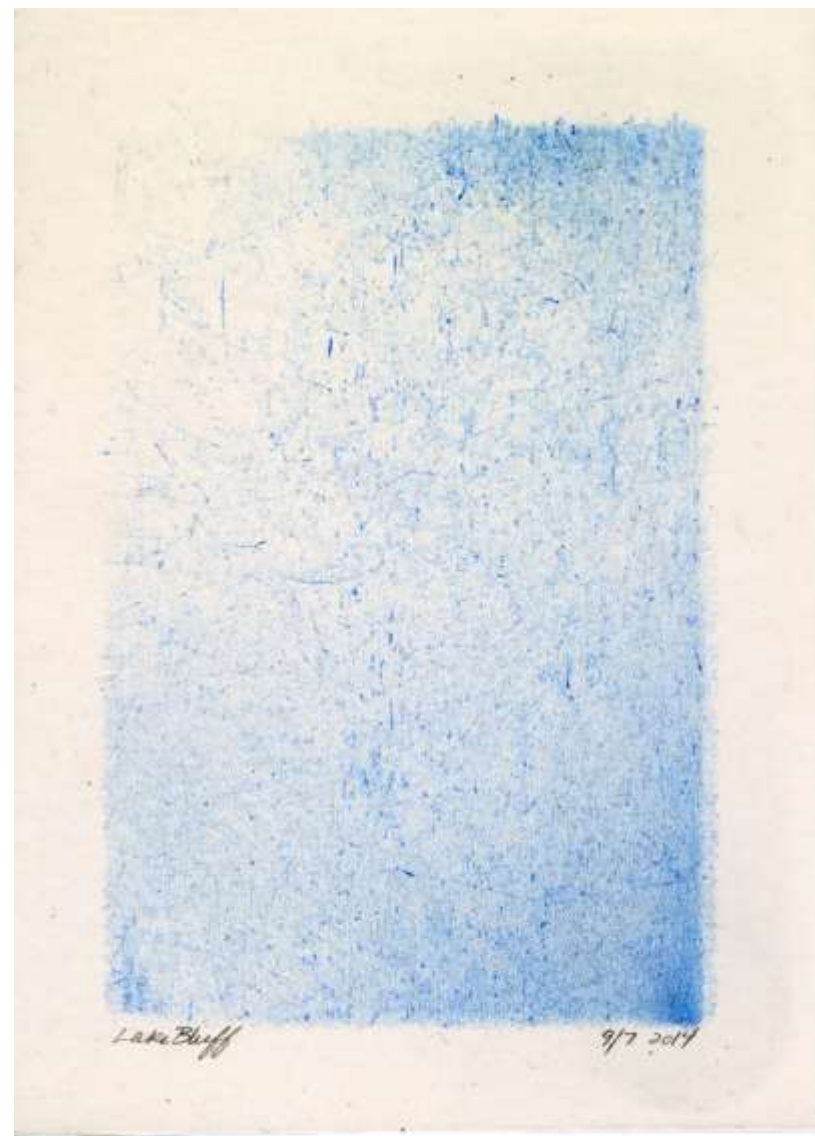
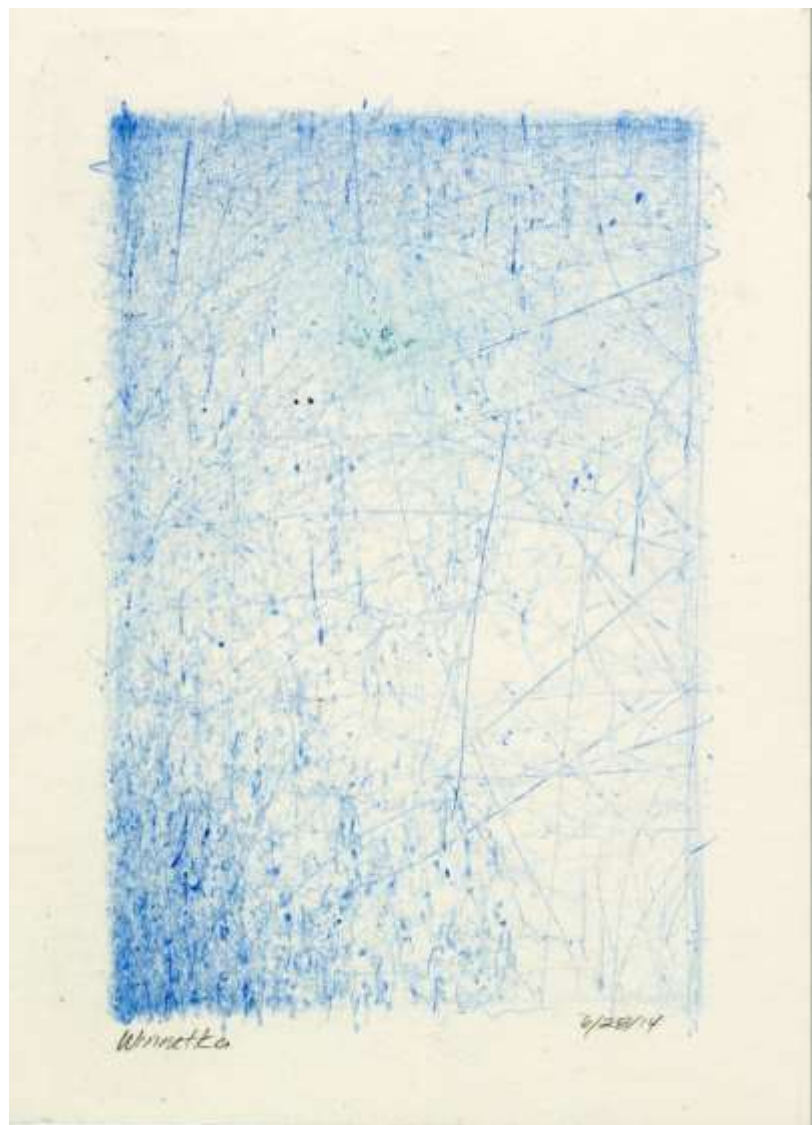




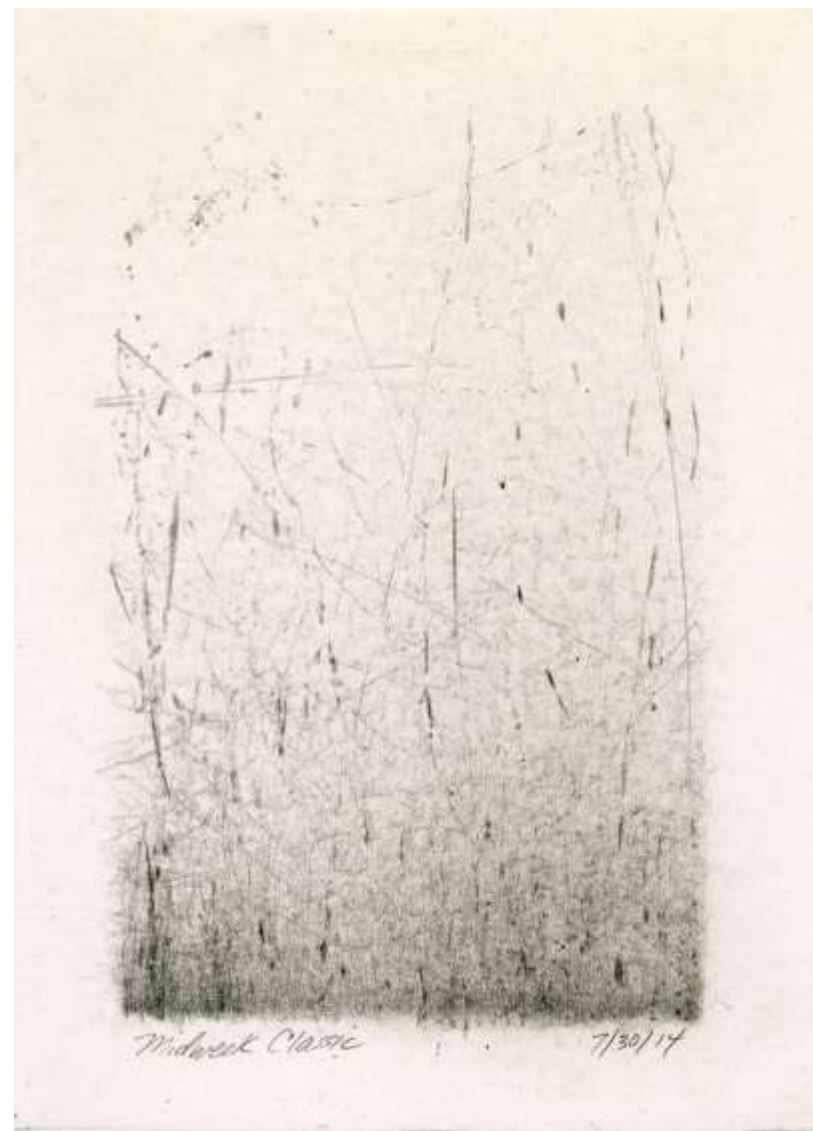












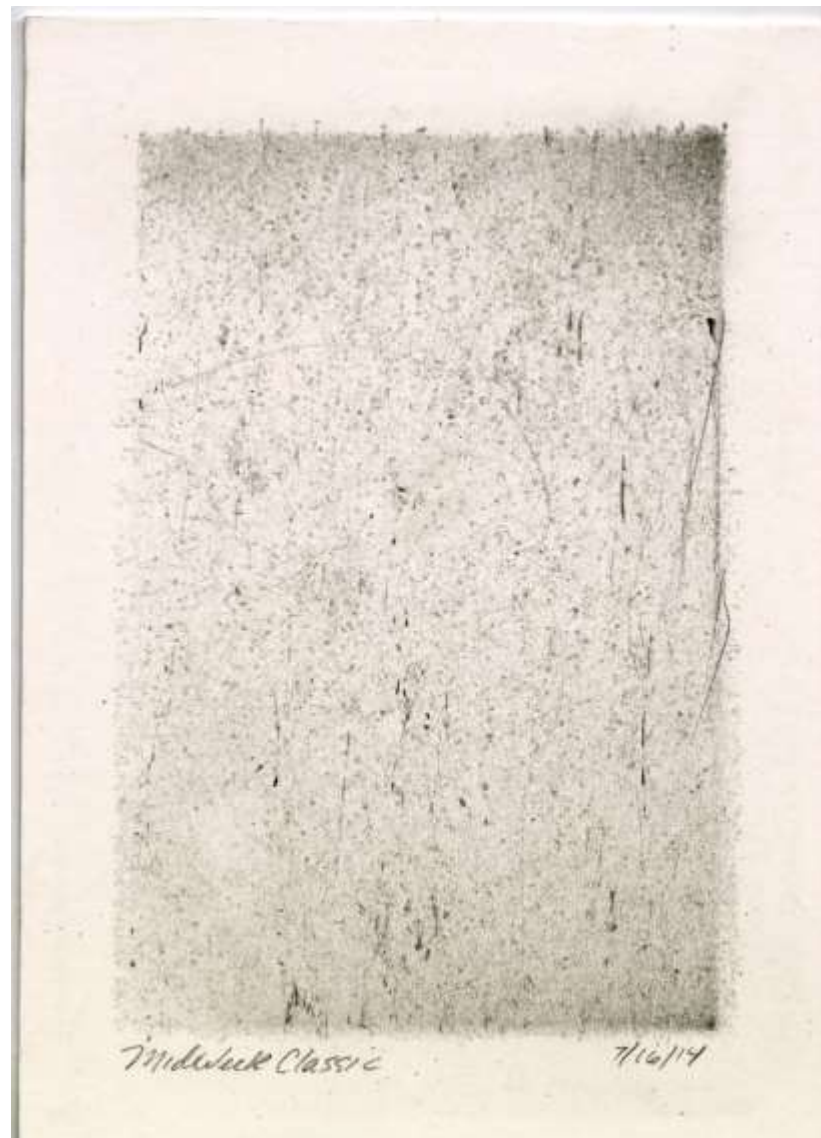
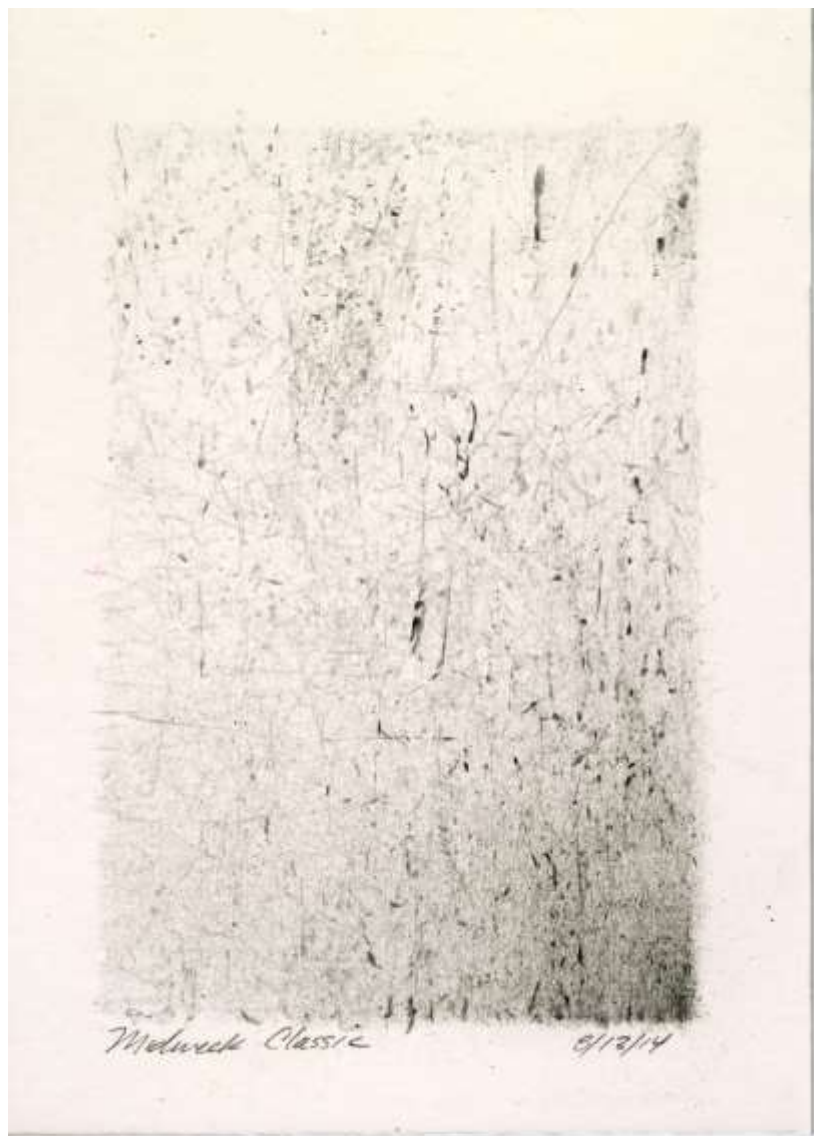


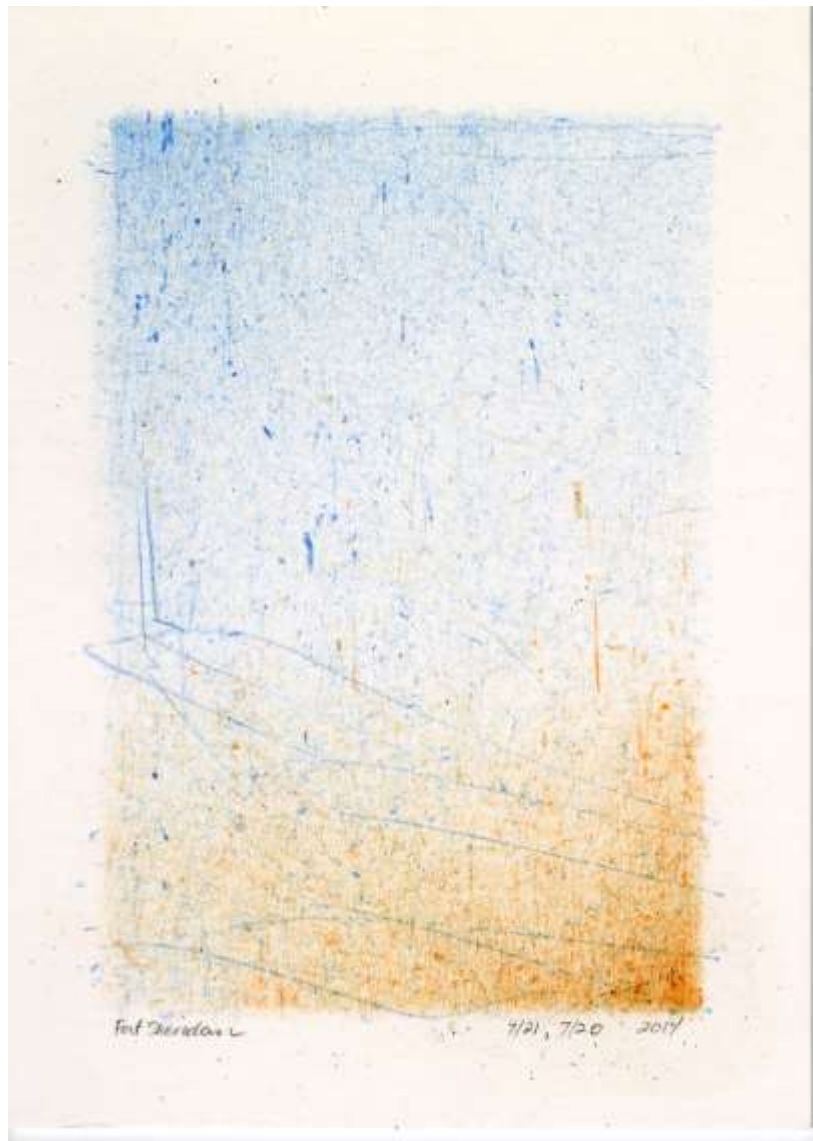
Hot Springs River Trail to End-Cut and Park 8/7/14

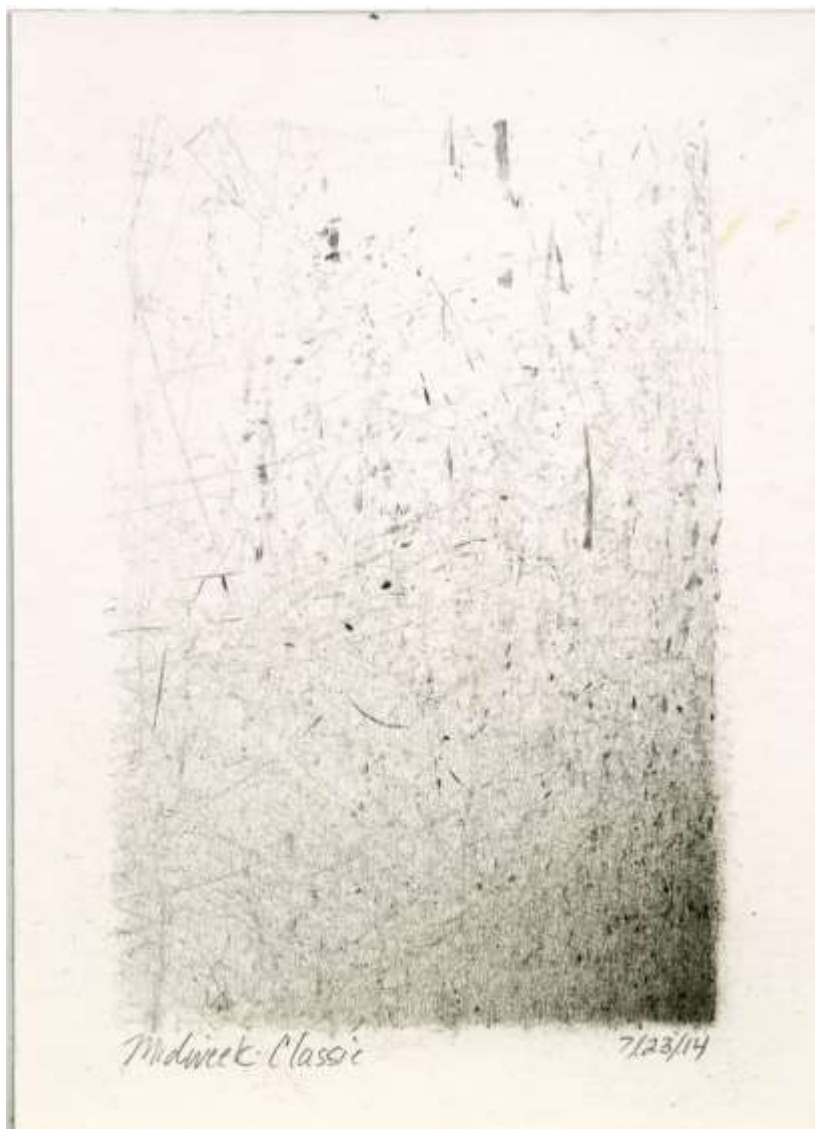


Chinigo Lake Front Trail 7/8/14

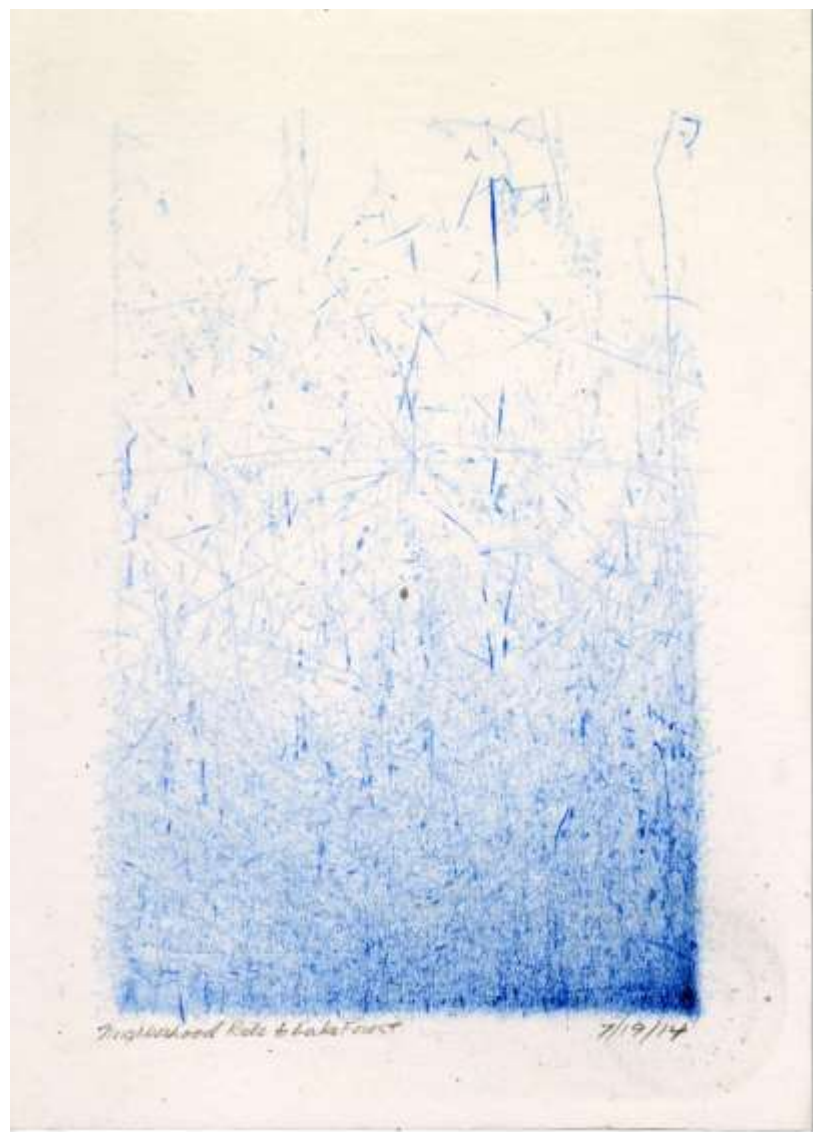












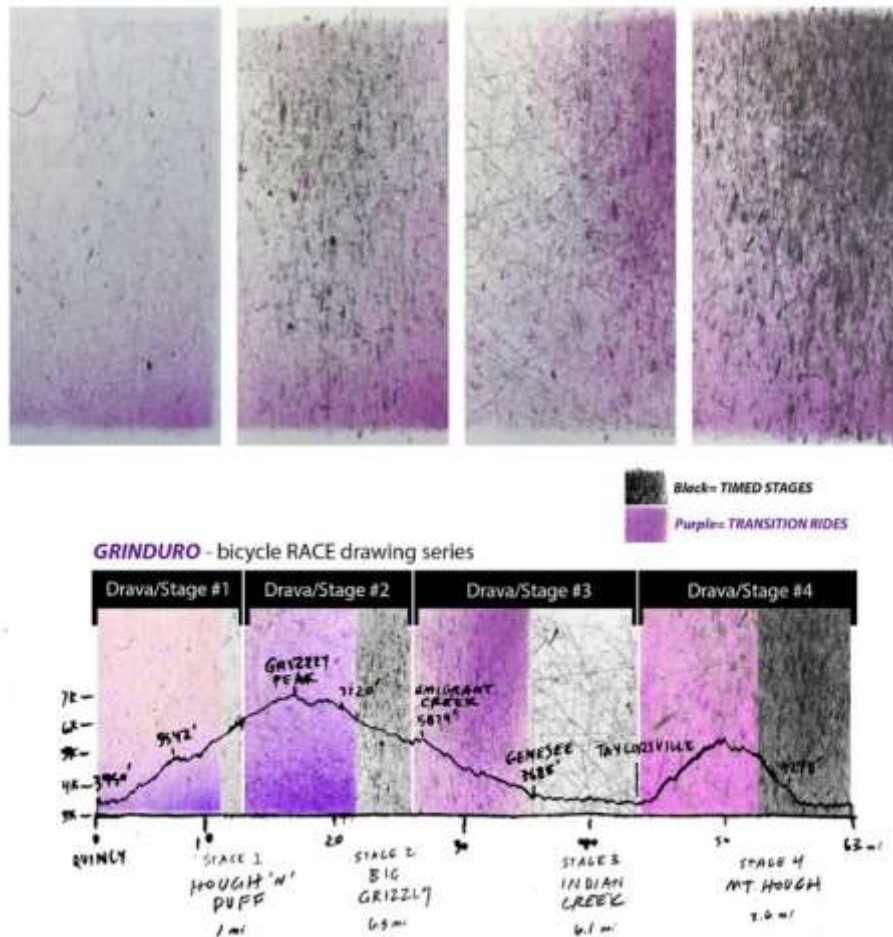


## A NEW KIND OF BIKE RACE

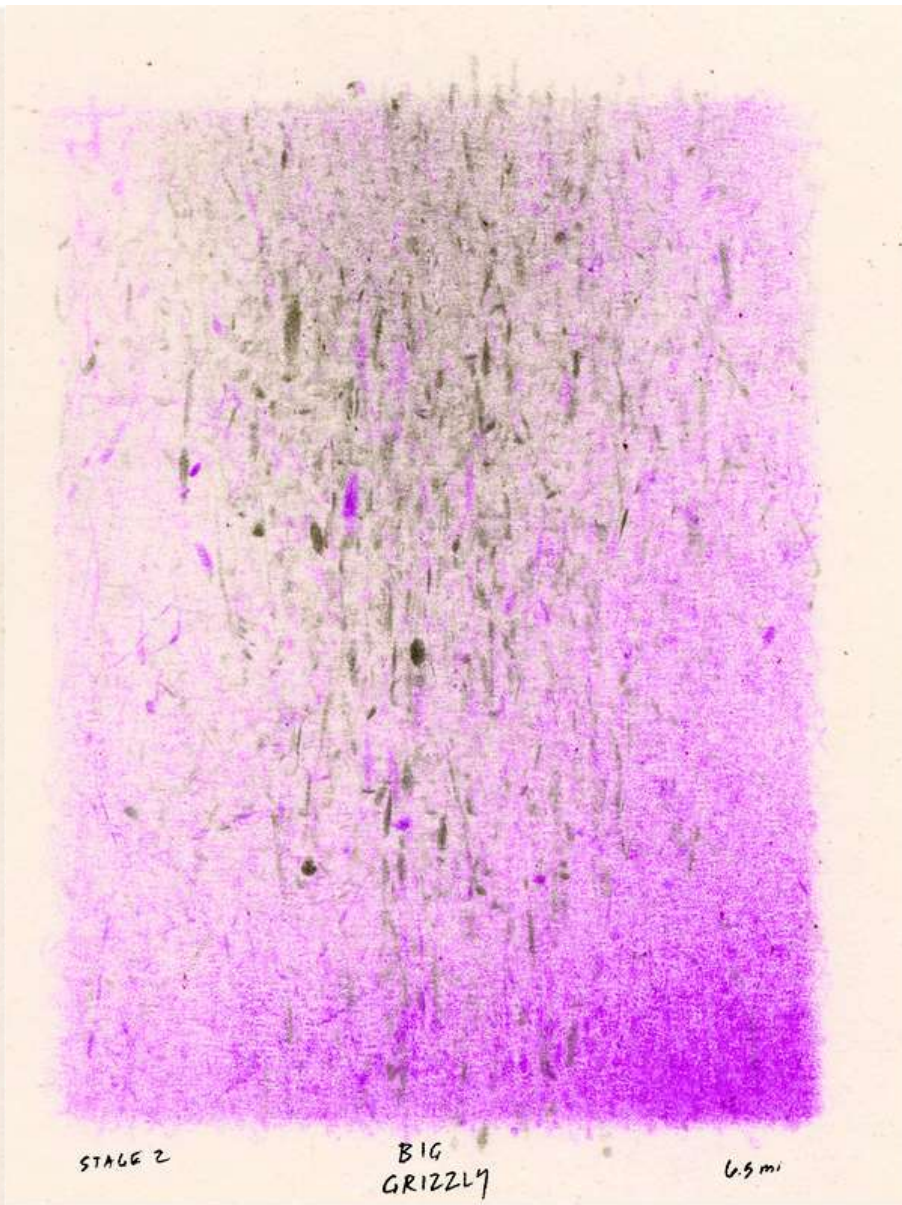
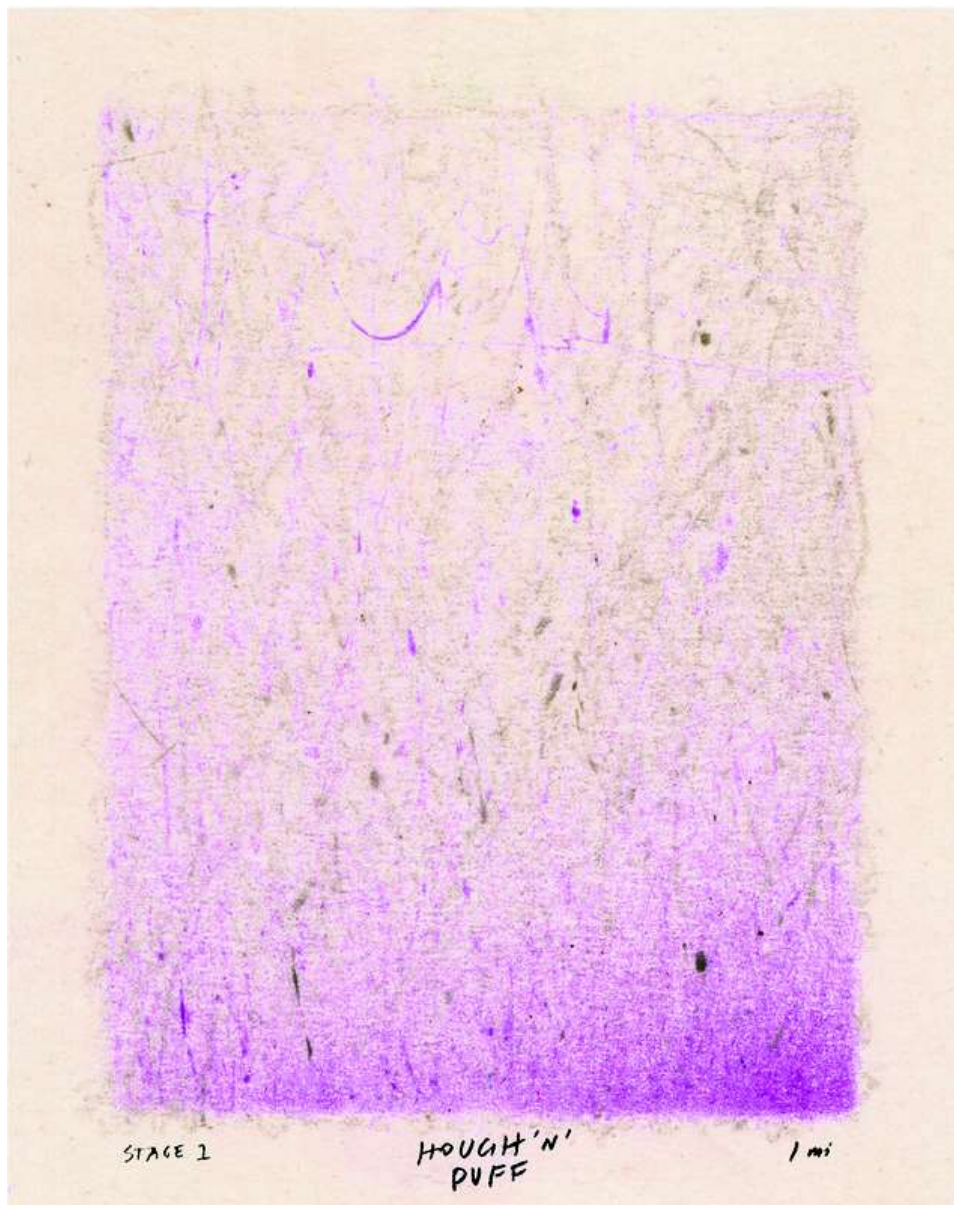
In short, Grinduro is just what the name suggests: Gravel Road Race + Mountain Bike-Style Enduro = one long loop of pavement and dirt, where finishing times aren't based on overall loop time, but four timed segments. But Grinduro is not just a bike race. It's a celebration of cycling with an impressive display of art.

The course is a serious affair (60 miles of constant up-and-down in rugged terrain) Each course features a mix of surfaces (smooth pavement, gravel and hard-packed dirt) long climbs and singletrack descents.

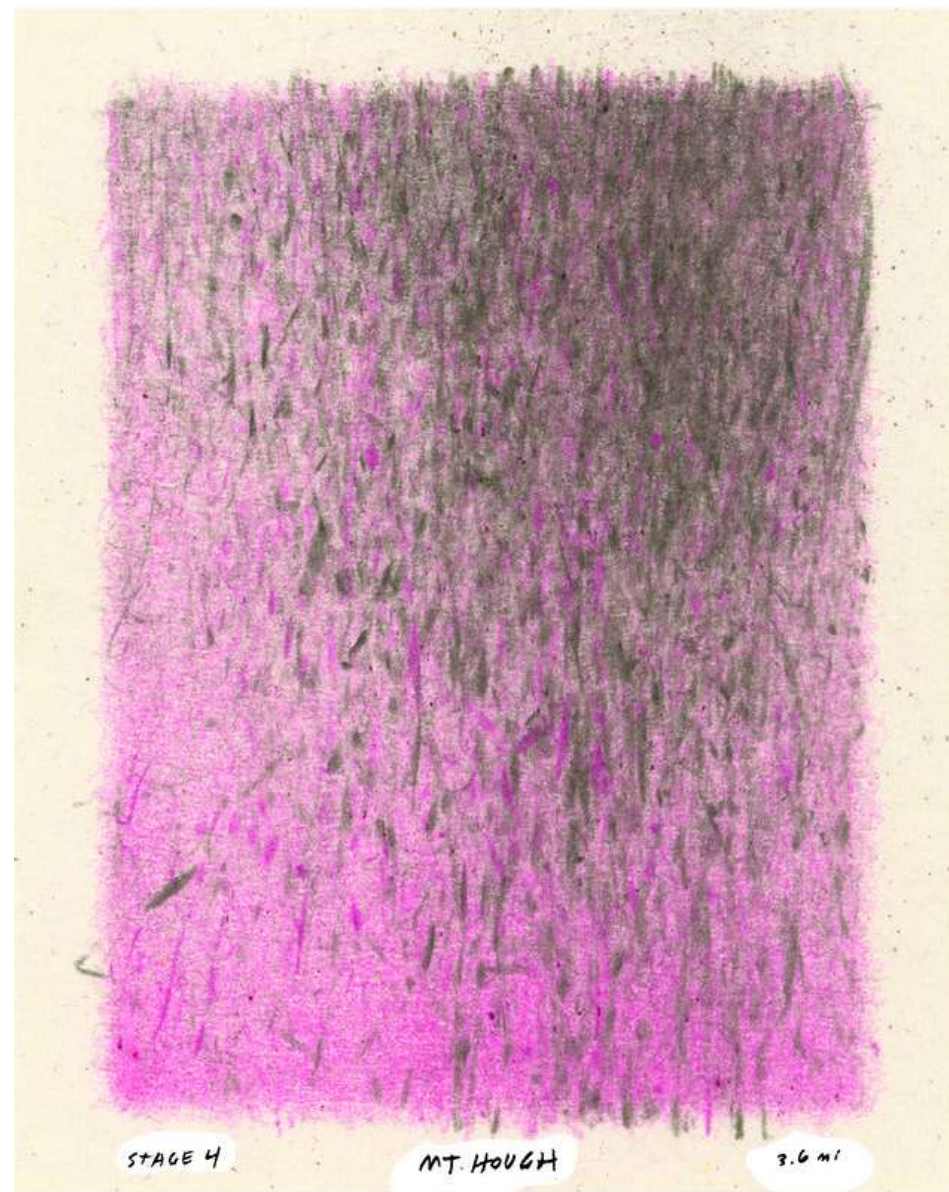
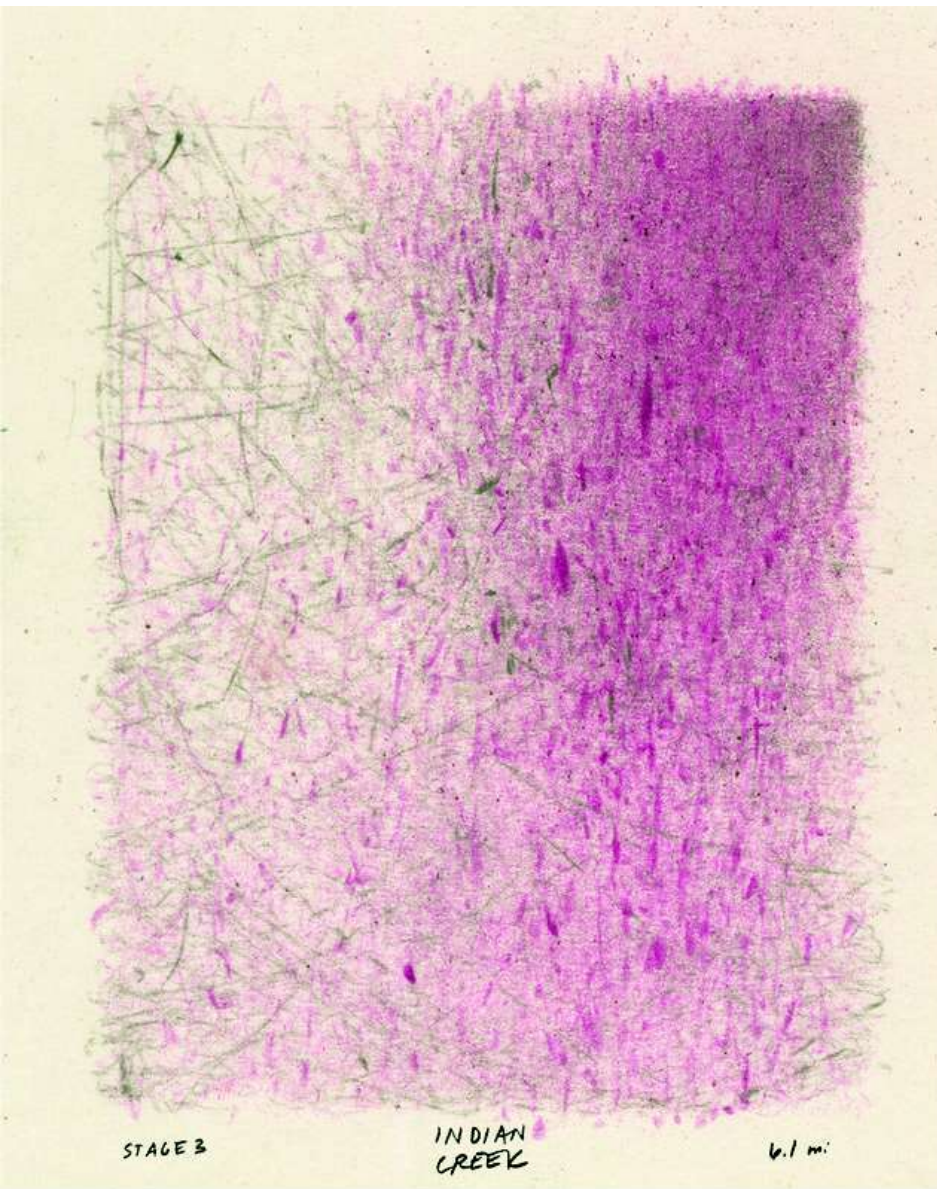
The Grinduro segments are designed to reward the most well rounded of rouleurs.







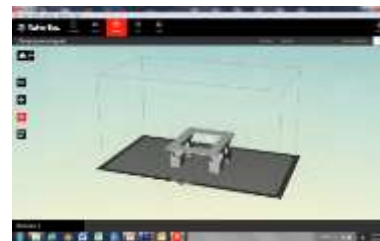
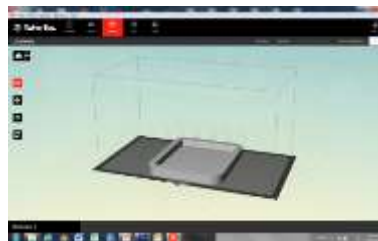
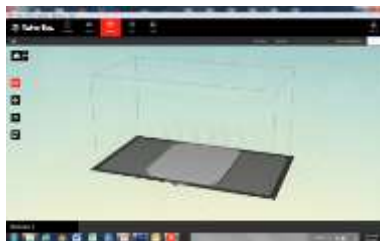




# Original Artworks and Prints available









drava 3.0

# Ingredients

- Asparagus rubber band
- 5/64 Drill bit
- Paper-Drawing surface
- 4mil Corrugated Cardboard
- X-acto knife
- Ruler
- Quarter-(25cents)
- Colored pencil
- Lighter
- 13 Zip ties
- Spray Can of Shellac
- 2 sided tape
- Sweet Bike Ride

